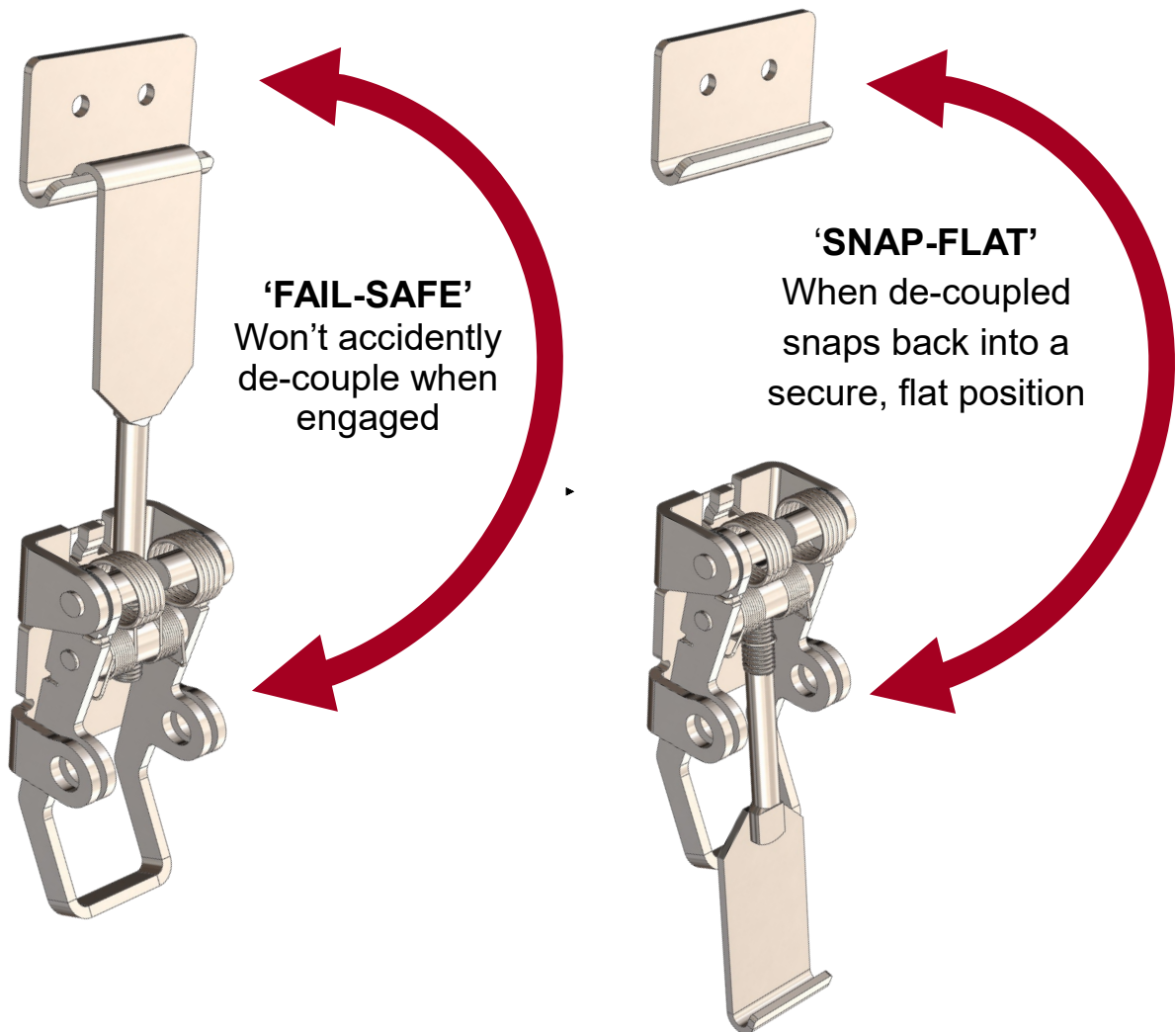


SNAP-FLAT™

The Safe Over-Center Latch

WORLD'S SAFEST CARAVAN LATCH



SAFETY FEATURE No 1

Ensures latch & hook remain securely engaged at ALL TIMES due to spring tension

SAFETY FEATURE No 2

The Latch & Handle 'snap back' to the Flat Position preventing injuries from the protruding latch

Patent Approved

SNAP-FLAT™

The Safe Over-Center Latch

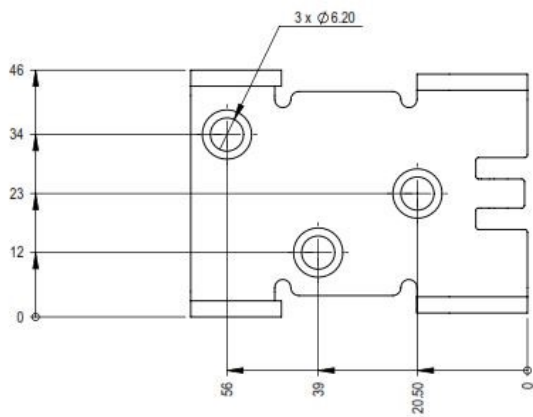
Don't Let This Ruin Your Holiday



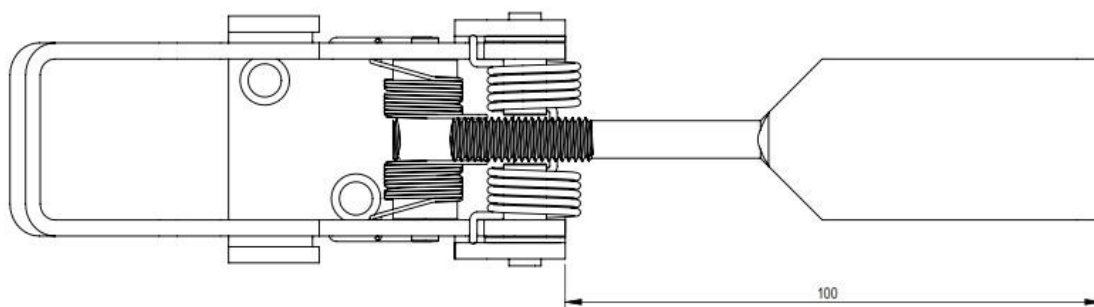
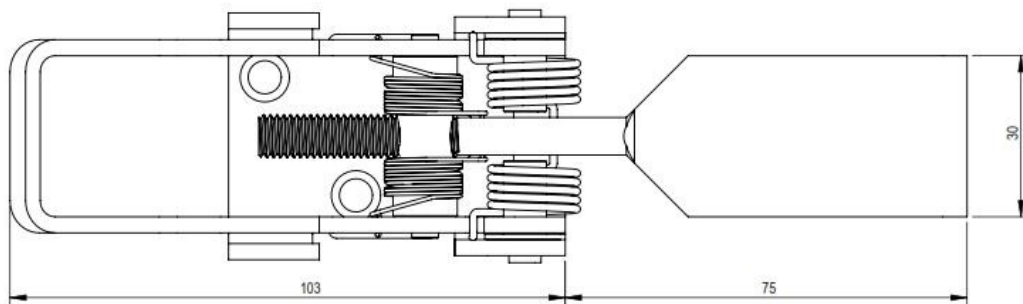
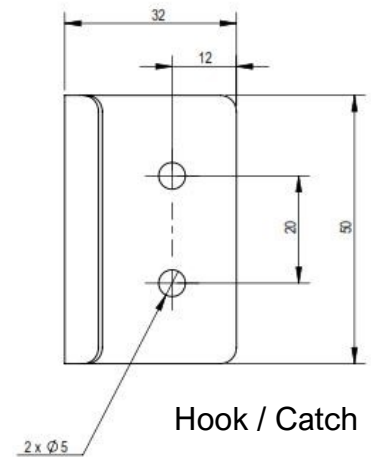
- ☑ The primary benefit of the Snap-Flat latch is that its spring tension **prevents the latch from disengaging** from the hook, even if the latch is engaged with the Hook but NOT secured into the over-centre position.
- ☑ The other feature of the SNAP-FLAT Latch is when the latch is un-coupled from the hook, the latch and handle 'Snap' back to the Flat Position. This prevents damage to the latch and personal injuries.
- ☑ If all 4 over centre latches aren't correctly disconnected, the Pop-Top lifting cable mechanism **can be damaged when winding up the Pop-Top**, The Snap-Flat visibly and audibly will "Snap" back reducing the chances of this occurring.



Model: M8 Caravan
Part No: SFM8-304-C
Material: 304 Stainless Steel



Latch Base



Installation Instructions

This Latch is a direct replacement for a standard NON-SPRUNG Caravan latch however it comes with a 3 hole fitting pattern rather than 4.

1. Remove current latches and apply silastic to each of the 4 holes prevent water entering.
2. Position Snap-Flat latch to cover the 4 holes and adjust the latch to ensure that it can reach the current catch / hook.
3. If reach of latch is okay (which it should be) then mark position of 3 holes in the base of the latch.
4. How you attach the latch to your pop top may vary depending upon your circumstances. One method is to use the existing screws and drill holes with a slightly smaller diameter. You may prefer to replace the screws with a stainless steel counter sunk equivalent. If your current latches have been pop riveted then you should use an appropriate pop rivet for the Snap-Flat latches.
5. If you have purchased new catches / hooks, then repeat the steps for these.

NOTE: If existing holes are worn you might like to consider moving the latch 5 mm up or down and redrilling new holes.